

# Welcome to Madrid

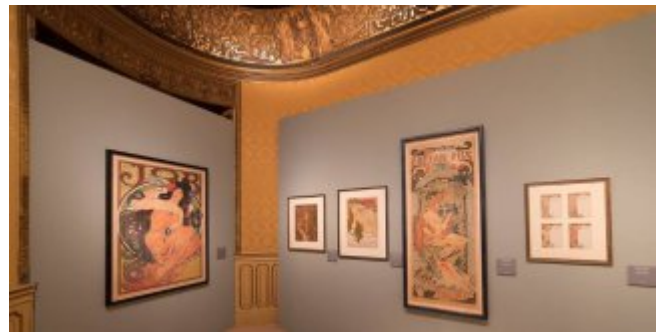
CLOSED UNTIL FURTHER NOTICE

---

**This 19<sup>th</sup>-century palace is located on Calle Arenal, a stone's throw from Puerta del Sol. Built between 1846 and 1847 by architect Aníbal Álvarez Bouquel, it was commissioned by banker and stockbroker Manuel Gaviria y Douza, Marquis of Gaviria. One of the most sumptuous palaces of its time, it is an example of Palazzo style architecture.**

Inaugurated by Queen Isabel II in 1851, it was well-known for the parties it hosted, which could be seen by passers-by through the balconies. Boasting a wonderful interior, particularly noteworthy are the frescoes in the exhibitions rooms, painted by Joaquín Espalter y Rull. The building was declared a Place of Cultural Interest in 1977.

Between 1991 and 2011, it housed one of the city's most popular nightclubs. After a large renovation, it reopened in 2017 as an exhibition space for Arthemisia, an Italian company specialising in the production, organisation and staging of major exhibitions.



Interest data

**Address**

Calle del Arenal, 9 28013

**Telephone**

(+34) 910 600 800

**Web**

<https://palaciodegaviriamadrid.com/>

**Bus**

002, 5, 15, 20, 53, 150, SE712, M1

**Price**

Check program

**Tourist area**

Austrias

**Email**

[contacto@palaciodegaviriamadrid.com](mailto:contacto@palaciodegaviriamadrid.com)

**Metro**

Ópera (L2, L5, R), Sol (L1, L2, L3)

**Cercanías (Local train)**

Madrid-Sol

**Opening times**

Mon - Thurs and Sun: 10am - 8pm

Fri - Sat: 10am - 9pm



PÁGINA OFICIAL DE TURISMO DE LA CIUDAD DE MADRID

