

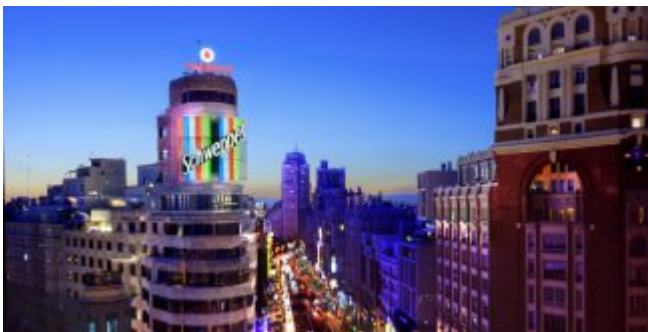
Welcome to Madrid

Also known as the Edificio Carrión (Carrión building), it is one of the most well-known buildings on Madrid's Gran Vía. The fourteen-storey building was a project by the architects Luis Martínez-Feduchi Ruiz and Vicente Eced y Eced, and it was built between 1931 and 1933. It is Art Deco in style, using materials such as marble and granite, and the Rolaco-Mac firm was in charge of the decoration and furniture.

But what was most noteworthy at the time was the advanced technology it incorporated, such as the use of Vierendeel-style concrete beams, fire-resistant materials and the cooling system, the first centralised one in Madrid, which occupied a whole floor. It received several design and architecture awards at the time.

The original project was for 64 apartments, a hotel (the Capitol, which currently belongs to the Vincci group), a café, a bar, a restaurant, a seltzer water factory and offices and ballrooms. On its lower floors, there was a cinema for almost 2,000 spectators: the Capitol cinema. In 2007, under the direction of the architect Rafael de la Hoz, a full restoration was completed, which eliminated all the advertising from the façade except for the Schweppes sign and a more modern one on the roof for the Vodafone mobile phone company.

In April 2018, it was declared a Monument of Cultural Interest (BIC) by Madrid's Regional Government, on account of its architectural style and its iconic status on the Gran Vía.



Interest data

Address

Calle Gran Vía, 41 28013

Web

<https://bit.ly/2uk2x11>

Tourist area

Sol / Gran Vía

Metro

Callao (L3, L5), Santo Domingo (L2)

Bus

001, 1, 2, 44, 46, 74, 75, 133, 146, 147, 148,
N16, N18, N19, N20, N21

Cercanías (Local train)

Madrid-Sol



PÁGINA OFICIAL DE TURISMO DE LA CIUDAD DE MADRID

