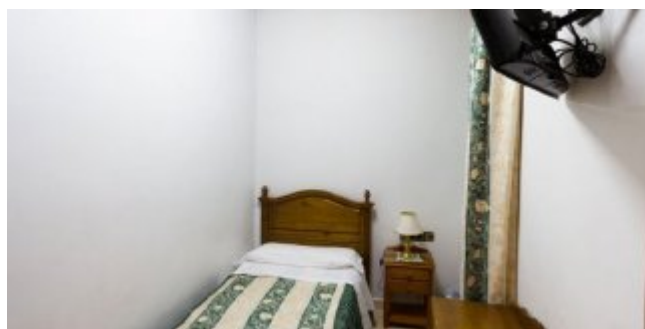
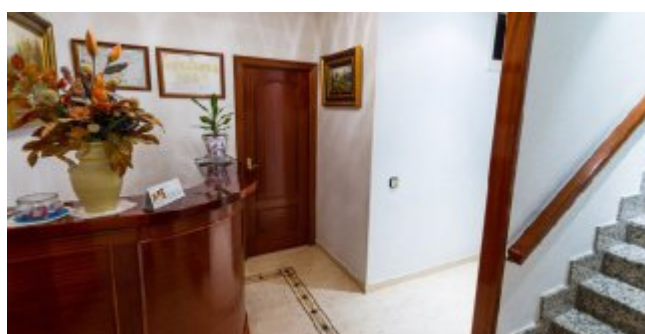


# Welcome to Madrid

Hostel located in the district of Las Letras, very close to Madrid's major museums: the Prado, the Thyssen and the Reina Sofía, as well as other tourist attractions in the city such as the Parliament, the Plaza Mayor, and the Puerta del Sol. The hostel has recently been renovated and offers various services such as a lift, 24 hour reception, free Wi-Fi, fully fitted bathroom in the rooms, desk, air conditioning and heating, large wardrobes and LCD televisions.



## Services



Wi-Fi gratis

## Complementary services



Ascensor

## Interest data

### Address

Calle Ventura de la Vega, 16, 2-3 28014

### Telephone

(+34) 91 429 61 73

### Web

<http://www.hostalalfaro.es/>

### Bus

9, 15, 5, 20, 51, 52, 53, 150

### Tourist area

Barrio de las Letras

### Email

[info@hostalalfaro.com](mailto:info@hostalalfaro.com)

### Metro

Sevilla (L2)

### Category

2 estrellas



PÁGINA OFICIAL DE TURISMO DE LA CIUDAD DE MADRID



MADRID